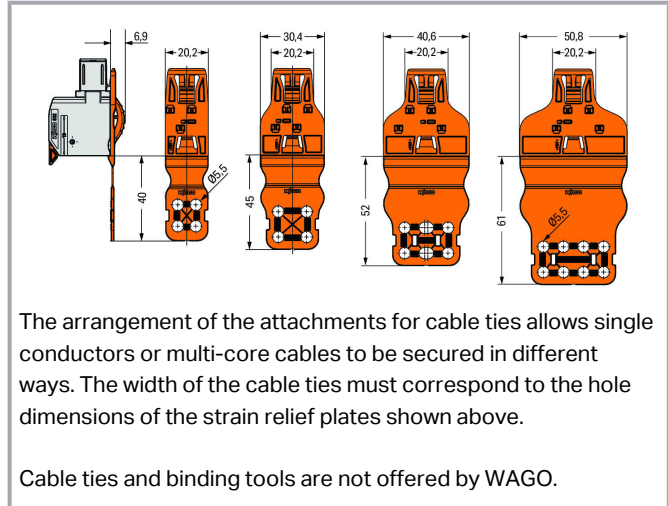


# Data sheet | Item number: 832-543

center locking with strain relief; Pin spacing 10.16 mm; orange

[www.wago.com/832-543](http://www.wago.com/832-543)



## Data

### Connection data

Pole No. 3

### Physical data

Width 30.4 mm

### Mechanical data

Mounting type Snap-in mounting

Suitable for standard male and female connectors

### Plug-in connection

Locking of plug-in connection Center locking lever

Subject to changes. Please also observe the further product documentation!

WAGO Corporation  
Germantown, WI 53022  
Phone: 1-800-DIN-RAIL (346-7245) | Fax: (262) 255-6222  
Email: [info.us@wago.com](mailto:info.us@wago.com) | Web: [www.wago.us](http://www.wago.us)

Do you have any questions about our products?  
We are always happy to take your call at (262) 255-6222 or 1 800-DIN-RAIL.



## Material data

Color	orange
Material group	I
Insulation material	Polybutylene terephthalate (PBT)
Weight	4.6 g

## Commercial data

Packaging type	BOX
Country of origin	DE
GTIN	4055143960755
Customs tariff number	3926909985

## Downloads

### Documentation

#### Additional Information

Technical explanations	Apr 3, 2019	pdf 2.0 MB	Download
------------------------	-------------	---------------	----------

## Environmental Product Compliance

### Compliance Search

Environmental Product Compliance 832-543 center locking with strain relief; Pin spacing 10.16 mm; orange	URL	Download
---	-----	----------

## Installation Notes

### Installation

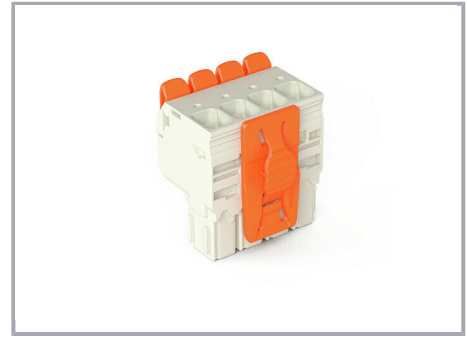
Subject to changes. Please also observe the further product documentation!



Locking lever; for field assembly



Locking lever; for field assembly



Locking lever; for field assembly

Subject to changes. Please also observe the further product documentation!

WAGO Corporation  
Germantown, WI 53022  
Phone: 1-800-DIN-RAIL (346-7245) | Fax: (262) 255-6222  
Email: [info.us@wago.com](mailto:info.us@wago.com) | Web: [www.wago.us](http://www.wago.us)

Do you have any questions about our products?  
We are always happy to take your call at (262) 255-6222 or 1 800-DIN-RAIL.